

The background of the cover is a complex, abstract digital artwork. It features a large, central sphere with a textured, multi-colored surface in shades of red, orange, green, and blue. Surrounding this sphere are numerous smaller, glowing spheres and intricate, web-like patterns of light blue and white lines. The overall composition is set against a dark, almost black background, with various light effects and particle trails scattered throughout, creating a sense of depth and dynamic energy.

2016  
Painter®  
Reviewer's Guide

# Painter<sup>2016</sup>®

---

## Contents

---

1   Presenting Corel Painter 2016 .....	1
2   Customer profiles .....	3
3   What's included? .....	5
4   Key features .....	7
Express yourself .....	7
Discover what's new .....	9
Expand your creativity .....	11
5   Art Gallery .....	13

---

# 1



Brian Pollett

## Introducing Corel® Painter® 2016

Corel® Painter® 2016 is the world's most expressive digital art studio. It's like no other paint program on the market. One of its hallmarks has always been an expansive collection of realistic Natural-Media® painting tools found nowhere else, and Painter 2016 continues to evolve the digital art world with the addition of innovative new brushes. Another distinguishing feature is the passionately supportive community of artists who combine their talent with the power of Painter in a range of professions. Not only do they actively participate in Painter's development by offering constructive feedback, but also share their work, tools and methods to inspire and encourage digital artists around the globe.

### Changing what's possible in art

Well-known and respected as the most imaginative paint program, Painter 2016 continues the tradition of pushing the envelope of digital art. With the addition of the exclusive new Audio Expression feature, users will feel the beat with their brushes, blend Particles with Real Watercolor, Liquid Ink and Impasto, or create luscious brushstrokes and realistic splatters using Dynamic Speckles. All types of artists can express themselves in energetic ways never thought possible.

One of the goals of Painter 2016 is to give digital artists the inspiration they need to keep their work fresh. In Painter 2016, their insights, suggestions and expertise drove a number of innovations, including UI updates, Visual Tooltips, Adobe® Photoshop® compatibility and brush import, plus additional inspirational brush packs to streamline any painting project. Artists of all kinds will find inspiration in our

professional artwork galleries and an array of new tutorials.

### So expressive, you won't need any other digital art software

Painter 2016 is the most expressive digital art studio because it keeps artists inspired on every level. When you combine that with the power it gives artists to mix and experiment with media and methods in unconventional ways, there are no limits to where it may lead.

Give it a try and you'll quickly see why it's garnered such an ardent following. Painter 2016 isn't just a paint program — it's an artistic symphony for the senses!



# 2



Lawrence Mann

## Customer profiles

### Photo artists

With powerful painting tools, and one-of-a-kind image cloning features found only in Painter 2016, photo artists can capture a moment and transform the image into a digital work of art. They will have everything they need to produce visually stunning photo art that will dazzle clients and enhance their professional services.

natural way for students to learn traditional art techniques in an environment that's very conducive to experimentation - without the cost and mess associated with traditional art supplies.

### Traditional artists

Painter 2016 lets traditional artists easily combine classic art practices and time-honored techniques with state-of-the-art Natural-Media technology to create digital art that's just as impressive as what they can create on a physical canvas. They'll find a new sense of freedom in the way they can paint.

### Illustrators

Let creativity reign with endless options in Painter 2016 that allow illustrators to vividly express their creative visions and leave a lasting impression. Illustrators work in a variety of fields and tell visual stories that elicit powerful emotions. Whether they're creating fantasy artwork for film, television or video games, drawing manga and comic art, or working on illustrations for web and print, Painter 2016 has all the necessary tools to accomplish their goals.

### Students and teachers

Painter is a vital asset for all budding artists and an essential component for art-related curriculum. With digital tools that mimic the look and feel of their real world counterparts, Painter 2016 offers a



# 3



Héctor Sevilla Luján

## What's included?

### Main application

- Corel Painter 2016, Mac OS® and Windows® versions

### Content

- Libraries of unique brushes, gradients, nozzles, patterns, and paper textures

### Documentation

- HTML Help (Windows) and Apple Help (Macintosh®) files
- Online User Guide and Getting Started Guide (PDF)
- Welcome Screen
- [youtube.com/paintertutorials](https://www.youtube.com/paintertutorials)
- [painterartist.com](http://painterartist.com)

### Minimum system requirements

#### Mac OS® version:

- Mac OS® X 10.10 or 10.9 (with latest revision)
- Intel® Core™ 2 Duo
- 2 GB of RAM (4 GB or higher recommended)
- 540 MB of hard disk space for application files
- Mouse or tablet
- 1024 × 768 screen resolution (1280 × 800 recommended)
- DVD drive (required for box installation)
- Safari v7 or higher

#### Windows® version:

- Microsoft® Windows® 10 (64-bit), Microsoft Windows 8.1 (64-bit), or Windows 7 (64-bit), with the latest Service Packs
- Intel® Pentium® 4, AMD Athlon™ 64, or AMD Opteron™ (Intel Core 2 Duo or higher recommended)
- 2 GB of RAM (4 GB or higher recommended)
- 750 MB of hard disk space for application files<sup>1</sup>
- Mouse or tablet
- 1024 × 768 screen resolution (1280 × 800 recommended)
- DVD drive (required for box installation)
- Microsoft® Internet Explorer® 11 or higher

**Upgrade policy:** Painter users of version 7 and up can take advantage of special discount pricing when upgrading to Painter 2016.

---

<sup>1</sup>. Additional space may be required for Microsoft .NET Framework 4.5





# 4



Yuki Matsumoto

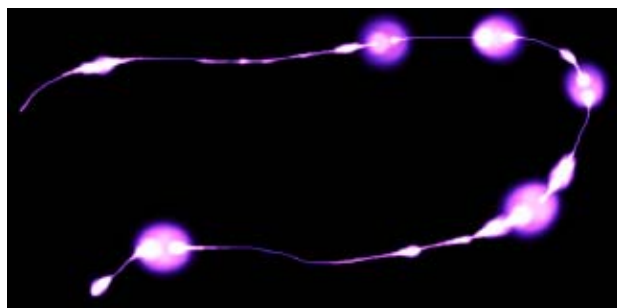
## Key features

Corel Painter 2016 is the world's most authentic digital art studio.

### Express yourself

Painter 2016 helps you express your creative vision in ways never thought possible. New Audio Expression brushes react to sound, so you can link brushes to music that inspires you or the sounds of your working environment. The addition of Dynamic Speckles brush technology, which produces luscious Natural-Media® brushstrokes, and the power to create even more brush variations gives you the freedom to create without boundaries and leave a lasting impression on any audience.


**New! Audio Expression:** Painter 2016 has brushes that react to sound, so you can use audio from your computer's microphone or streaming music to modify the look and feel of any brush. Audio Expression lets you link a variety of brush attributes to an audio input. For example, if you link audio to brush size, angle, and color variability, brushstrokes will change their width, angle and color in synch with the input. By syncing a song or ambient noise to a wide variety of brush controls, you can make your canvas sing.



*The width (size) of the brushstroke changes in synch with the audio signal.*

### Give it a try

#### Linking brush effects to an audio input

- 1 Choose **Window** ▶ **Audio** ▶ **Audio Settings Panel**.
- 2 Enable the **Enable Audio Input** check box.
- 3 Choose an audio source from the **Input** list box.
- 4 Choose **Window** ▶ **Brush Control Panels**, and choose any of the following panels: **Size**, **Opacity**, **Angle**, **Stroke Jitter**, **Color Variability**, **Color Expression**, **Dynamic Speckles**, **Grain**, **Airbrush**, **Liquid Ink**, **Particles - Common**, **Flow Particles**, **Gravity Particles**, **Spring Particles**.
- 5 In the Audio Expression panel, move the following sliders:
  - **Strength** — adjusts the strength of the audio signal
  - **Range** — sets the range of the audio expression
- 6 Click the **Audio Expression** button .

**New! Dynamic Speckles:** This feature combines Particle System physics and brush-thickness control linked to your touch, allowing you to create luscious Natural-Media brushstrokes or progressive-looking Pollock splatters. Dynamic Speckles generate a continuous brushstroke from discrete spots of color or speckles. The speckles in the brushstroke are truly dynamic — they are generated as you paint.

You can use this feature with select Bristle, RealBristle and Particle brushes, so you can take full advantage of those revolutionary, Painter-exclusive technologies. Plus, you can search for Dynamic Speckles to quickly access a variety of new brushes.



*Dynamic Speckles generate a continuous brushstroke from discrete spots of color or speckles.*

## Give it a try

### Using Dynamic Speckles

**1** In the Search bar, type **Dynamic Speckles** in the Search text box.

The Search bar is located to the right of the property bar, in the upper-right corner of the document window.

**2** Choose a brush variant from the list of search results.

**3** Choose **Window ▶ Brush Control Panels ▶ Dynamic Speckles**.

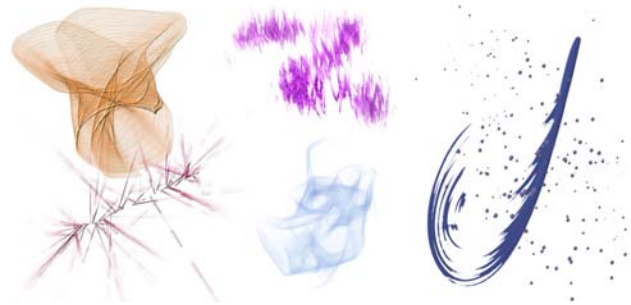
**4** Experiment with any of the following settings as you paint:

- Move the **Count** slider to adjust the number of dynamic speckles.
- Move the **Size** slider to adjust the size of dynamic speckles.
- Move the **Min Size** slider to set the range of speckle size variability.
- Move the **Scale/Size** slider to scale the number and size of dynamic speckles as the brush size changes. Higher values scale result in more accurate scaling.
- Click the **Hard** or **Soft** button to choose soft or hard edges.

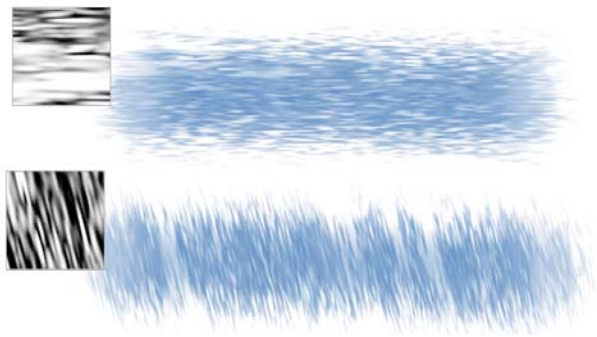
## Give it a try

- Move the **Random Thickness** slider to vary the size of dynamic speckles.
- Move the **Random Opacity** slider to vary the opacity of dynamic speckles.

**New! Special Media brushes:** Corel Painter 2016 offers additional dab types, which are methods for applying media to the canvas. The new dab types use both Particles and Liquid Ink or Watercolor dabs. These combination dab types include: Liquid Ink Gravity Particles, Liquid Ink Flow Particles, Liquid Ink Spring Particles, Watercolor Gravity Particles, Watercolor Flow Particles, and Watercolor Spring Particles.



**New! Paper and Flow Map Rotation:** You can change the angle of paper texture and flow maps to get an unprecedented variety in the look of your brushstrokes. You can rotate your favorite papers and Flow Maps in any direction, at any time, to achieve that perfect artistic touch in your work. Directing the rotated texture with hard media or flow watercolor through the rotated grain allows you to achieve looks only previously possible within the traditional world.



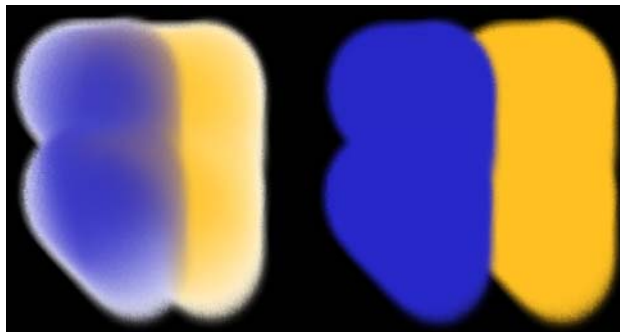
*A brushstroke applied to a non-rotated paper texture (top) and a rotated paper texture (bottom).*

## Give it a try

### Rotating paper texture

- 1 Choose **Window** ▶ **Paper Panels** ▶ **Papers**.
- 2 Move the **Paper Rotation** slider.

**New! Blending 2.0:** New blending brush variants deliver improved blending across both layers and media types. With the new blending presets, you will be able to edit your blending brush variants easier, faster and smoother than ever before. And whether you are painting with a single color or blending two or more colors on a layer, a new layer blending option produces brushstrokes without white fringes.



*Brushstrokes without (left) and with Enhanced Layer Blending (right)*

## Discover what's new

It's easier than ever to discover the revolutionary brush technologies of Corel Painter. A redesigned Welcome Screen opens on launch and is the perfect place to access video tutorials, set up your workspace, and get new content. What's more, Brush Hints and Visual Tooltips make it easier to learn about brushes and their potential.

**New! UI color options:** Painter 2016 offers flexible UI color scheme options so you can set up the optimal environment for each painting project. You can change your color scheme to dark, sepia or frost.

## Give it a try

### Changing the UI color

- 1 Do one of the following
  - (Mac OS) Choose **Corel Painter 2016** menu ▶ **Preferences** ▶ **Interface**.
  - (Windows) Choose **Edit** ▶ **Preferences** ▶ **Interface**.
- 2 Choose an option from the **Color Theme** list box.
- 3 Restart the application.

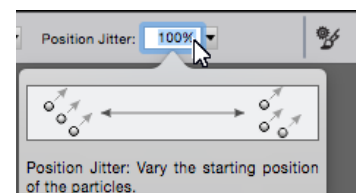
**New! Brush Hints:** Depending on the brush type you are currently working with, context-sensitive brush hints provide useful tips about brush technologies. It's a great way to discover different ways you can take advantage of a variety of unique Corel Painter features, including Particles, Watercolor brushes, Liquid Ink, Cloner, Impasto, and the new Dynamic Speckles.

## Give it a try

### Accessing Brush Hints

- Choose **Help** ▶ **Hints**.

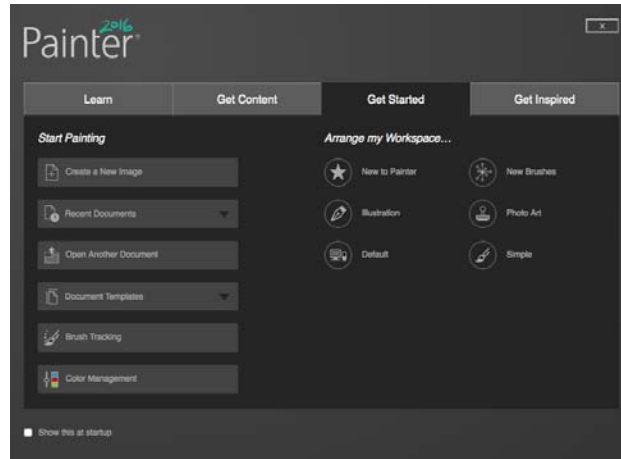
**New! Visual Tooltips:** Some tooltips include illustrations that make it easy to understand how adjusting Painter's brush controls will visually impact your custom brushes.



*You can see the effect setting values at a glance.*

**Enhanced!** **Welcome Screen:** With the Welcome Screen, you can quickly start or open an image, choose a workspace that suits your needs, access online learning videos, find new brushes and other content online, and get inspired by a gallery of

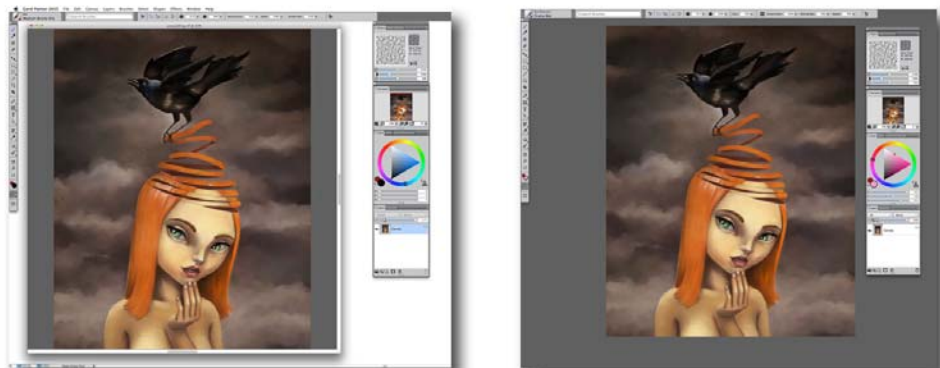
original artwork created with Corel Painter. The Welcome Screen appears when you start the application, and you can also access it by clicking **Help ▶ Welcome**.



*The Welcome Screen makes it quicker and easier to find information and the tools you need.*

**Enhanced!** **Document Views:** Whether you are working on a project, showing your work, or demonstrating a technique, Corel Painter 2016 makes it even easier to switch between document views. You can switch document views from the toolbox, the Window menu, and by using keyboard shortcuts. The Default view shows all the

open documents together with commonly used application controls while the Single Document view lets you focus on the active document. The Presentation Mode hides the menu bar and the taskbar of the operating system, leaving only essential controls.




*Single-document view (left), Presentation mode (right).*

## Give it a try

### **Switching document views**

**1** Choose **Window**, and one of the following:

- **Single Document View**
- **Presentation Mode**

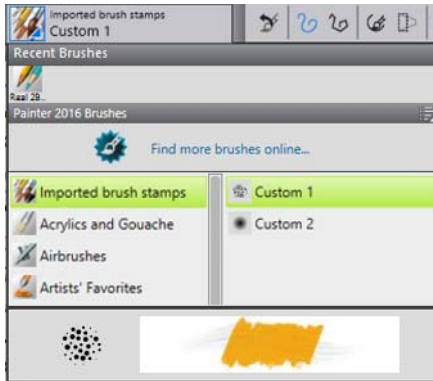
You can switch views by clicking the **Single Document View** button  and the **Presentation Mode** button in the toolbox.

## Expand your creativity

Painter 2016 makes it easy to expand your creativity by letting you bring in tools from other paint programs, offering the ability to make new brushes, and simplifying the sharing of your custom content with other digital artists.

### **New! Adobe® Photoshop® brush file import:**

With Corel Painter 2016, you can import the brush stamps of pixel-based Adobe Photoshop brushes stored in Adobe Brush Resource (ABR) files. These files contain a collection of Adobe Photoshop brushes, including shape, texture, dynamics, and other brush information. All other brush attributes specified in the ABR files are not imported, but can be fully customized in Corel Painter.



*Each imported brush stamp appears as a new brush variant.*

**Enhanced! Content sharing:** Corel Painter 2016 simplifies sharing your unique creation tools by giving you the ability to export all custom brushes, papers, patterns, and flow maps to a Custom Toolbox (BOX) file. Whether your priority is allowing others to follow along in class, or just wanting to share your favorite custom content, the new export feature will put it all together for you in a perfect package.

## Give it a try

### **Saving a custom palette as a custom toolbox**

- 1 Choose **Window ▶ Custom Palette ▶ Organizer**.
- 2 Choose a palette from the **Custom Palette** list.
- 3 Click **Save As BOX**.
- 4 In the **New Palette File** dialog box, type a name in the **File Name** text box.
- 5 Choose the drive and folder where you want to save the file.  
It's a good idea to store all saved palettes in the same folder.

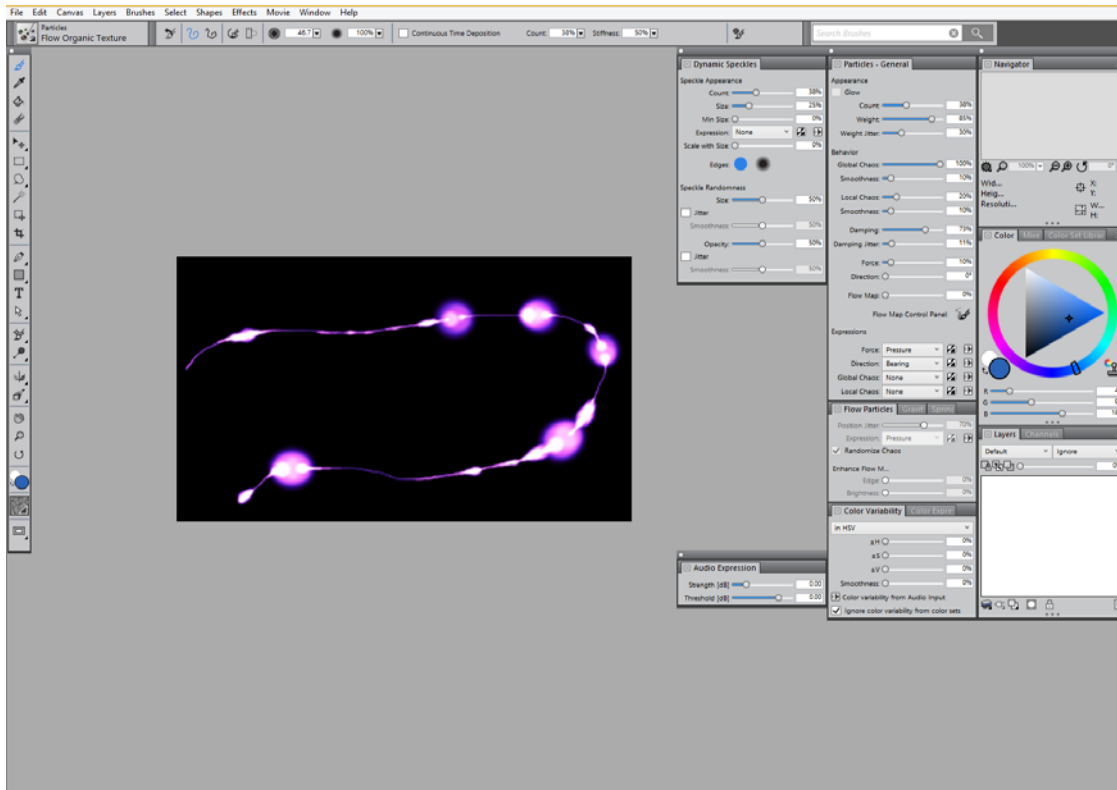
## Give it a try

### **Importing Photoshop Brush Images**

- 1 Choose **Brushes ▶ Import ▶ New from Photoshop Brush Stamps (ABR)**:
- 2 In the **Import ABR Brush Library** dialog box, select a Photoshop Brush Image (ABR) library.
- 3 In the **New Brush Category** dialog box, type a name in the **New Category Name** box

**New! Inspirational brushes:** The New Brushes Palette Arrangement displays the panels of new brush features and technologies, such as Audio Expression and Dynamic Speckles, so you can easily

experiment with all the latest and greatest brush technology. You can also preview bonus in-app Brush Packs that will showcase just the right brush for your next painting project.



The New Brushes palette arrangement displays the panels and controls for latest brush technologies.

## Give it a try

### **Displaying the latest brush technology**

- Choose **Window** ► **Arrange Palettes** ► **New Brushes**.

You can search for new or updated brushes in Corel Painter 2016 by typing **2016** in the **Search** box.

# 5



Miklós Földi

## Art Gallery

Every day, artists around the world trust Painter to help them explore their creativity and express themselves through art. We hope you enjoy these samples of artwork created by our Painter artists.



Horizon by Yuki Matsumoto



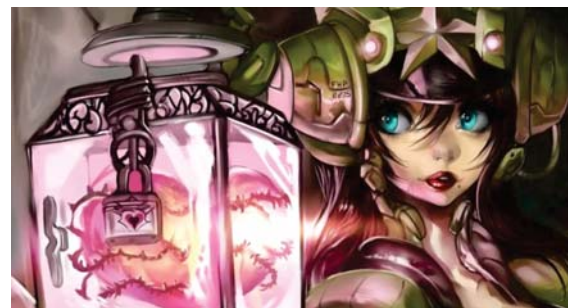
Paolo d'Altan



Ladies by Ad van Bokhoven



Pascal Sibertin



Héctor Sevilla Luján



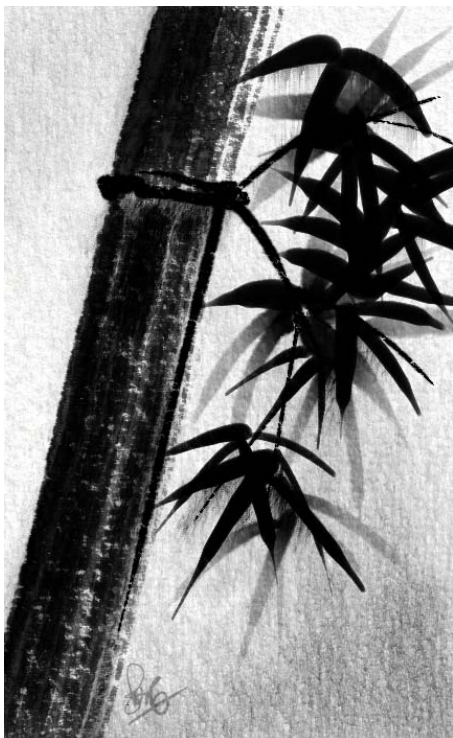
*Beautiful Chaos* by Heather Michelle Chinn



*Biltmore Wines* by Marilyn Sholin



*Totem* by Aaron Rutten



*Bamboo* by Skip Allen



*Confrontation* by Jeff Kimbler





*Reno* by Android Jones



*Succulents* (left) and *Geisha in the Blossoms* (right) by Karen Bonaker

# About Corel

Corel is one of the world's top software companies providing some of the industry's best-known graphics, productivity and digital media products. Boasting the most comprehensive portfolio of innovative software, we've built a reputation for delivering solutions that are easy to learn and use, helping people achieve new levels of creativity and productivity. The industry has responded with hundreds of awards for innovation, design, and value.

Used by millions of people around the world, our product lines include CorelDRAW® Graphics Suite, Corel DESIGNER®, CorelCAD™, Corel® Painter®, Corel® PaintShop® Pro, Corel® VideoStudio®, and Corel® WordPerfect® Office. For more information on Corel, please visit [www.corel.com](http://www.corel.com).

Copyright © 2015 Corel Corporation. All rights reserved.

Corel® Painter® 2016 Reviewer's Guide

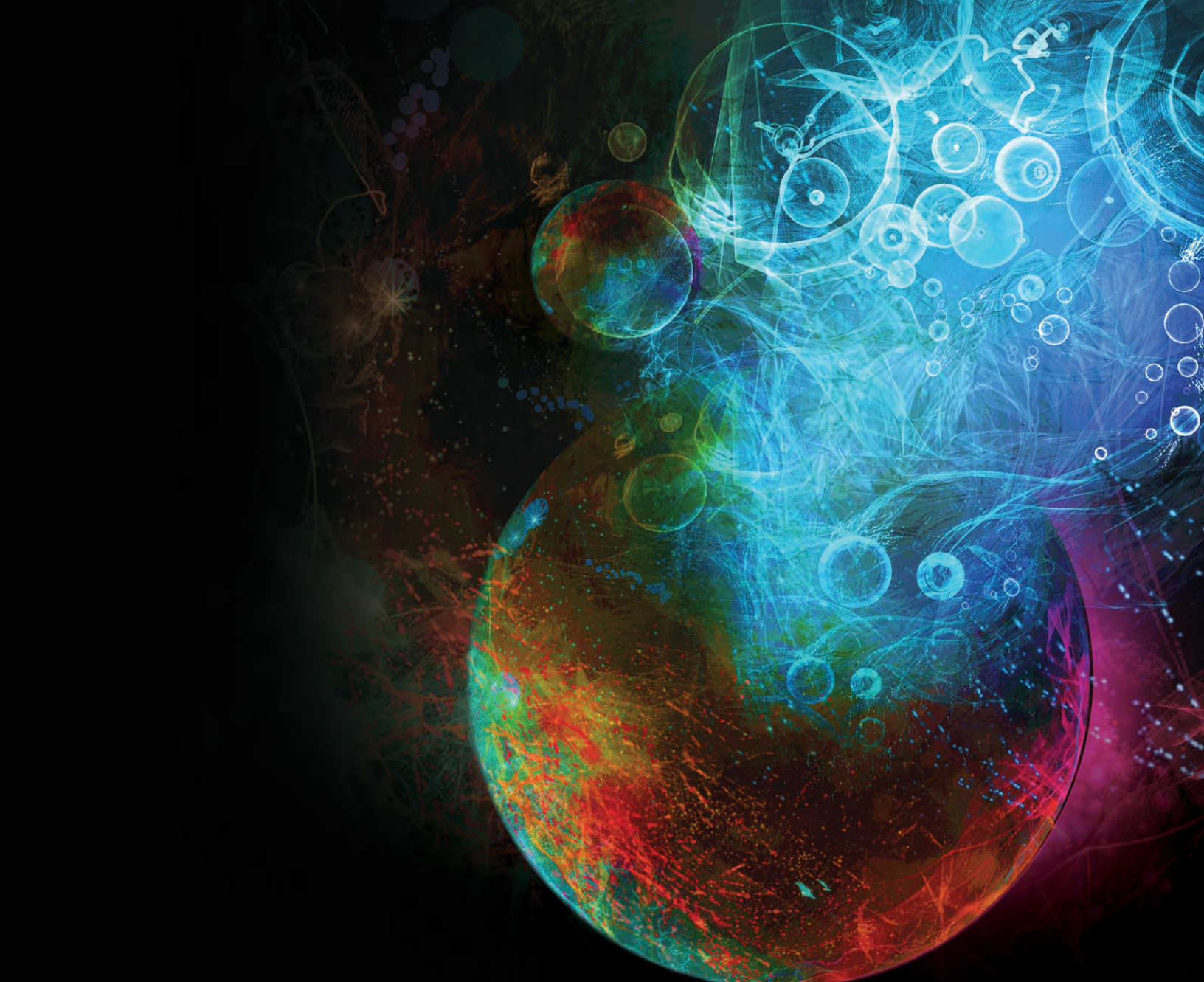
Protected by U.S. Patents 5652880; 5347620; 5767860; 6195100; 6385336; 6552725; 6657739; 6731309; 6825859; 6633305; Patents Pending.

Product specifications, pricing, packaging, technical support and information ("specifications") refer to the retail English version only. The specifications for all other versions (including other language versions) may vary.

INFORMATION IS PROVIDED BY COREL ON AN "AS IS" BASIS, WITHOUT ANY OTHER WARRANTIES OR CONDITIONS, EXPRESS OR IMPLIED, INCLUDING, BUT NOT LIMITED TO, WARRANTIES OF MERCHANTABILITY, SATISFACTORY QUALITY, MERCHANTABILITY OR FITNESS FOR A PARTICULAR PURPOSE, OR THOSE ARISING BY LAW, STATUTE, USAGE OF TRADE, COURSE OF DEALING OR OTHERWISE. THE ENTIRE RISK AS TO THE RESULTS OF THE INFORMATION PROVIDED OR ITS USE IS ASSUMED BY YOU. COREL SHALL HAVE NO LIABILITY TO YOU OR ANY OTHER PERSON OR ENTITY FOR ANY INDIRECT, INCIDENTAL, SPECIAL, OR CONSEQUENTIAL DAMAGES WHATSOEVER, INCLUDING, BUT NOT LIMITED TO, LOSS OF REVENUE OR PROFIT, LOST OR DAMAGED DATA OR OTHER COMMERCIAL OR ECONOMIC LOSS, EVEN IF COREL HAS BEEN ADVISED OF THE POSSIBILITY OF SUCH DAMAGES, OR THEY ARE FORESEEABLE. COREL IS ALSO NOT LIABLE FOR ANY CLAIMS MADE BY ANY THIRD PARTY. COREL'S MAXIMUM AGGREGATE LIABILITY TO YOU SHALL NOT EXCEED THE COSTS PAID BY YOU TO PURCHASE THE MATERIALS. SOME STATES/COUNTRIES DO NOT ALLOW EXCLUSIONS OR LIMITATIONS OF LIABILITY FOR CONSEQUENTIAL OR INCIDENTAL DAMAGES, SO THE ABOVE LIMITATIONS MAY NOT APPLY TO YOU.

Corel, the Corel logo, CorelDRAW, Corel DESIGNER, CorelCAD, PaintShop Pro, Painter, VideoStudio, and WordPerfect are trademarks or registered trademarks of Corel Corporation and/or its subsidiaries in Canada, the U.S., and/or other countries.

Other product, font, and company names and logos may be trademarks or registered trademarks of their respective companies.



# Painter<sup>2016</sup>®

Media Contact North America

Michaela Schreiter  
Public Relations Manager  
Corel Corporation  
613-728-0826 ext. 1323  
[michaela.schreiter@corel.com](mailto:michaela.schreiter@corel.com)



**Corel Corporation**  
1600 Carling Ave.  
Ottawa, ON  
Canada K1Z 8R7