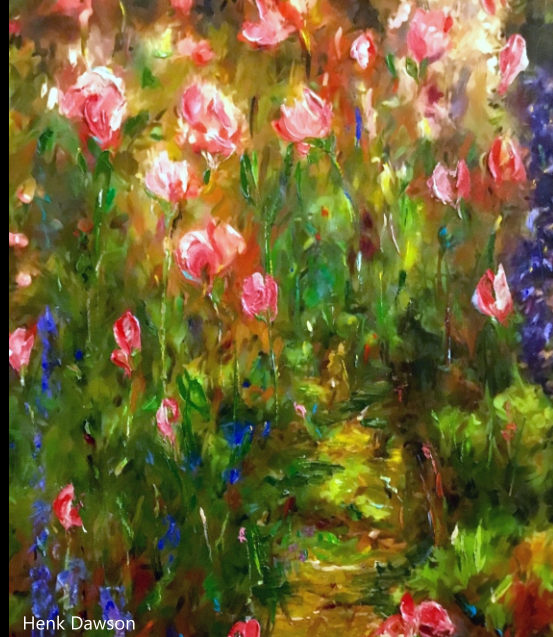




Waheed Nasir



Henk Dawson



Héctor Sevilla Luján



Katarina Sokolova

Painter[®] 2017

REVIEWER'S GUIDE



Android Jones



David Niño

Contents

Introducing Corel Painter 2017	1
Artist profiles	3
What's included?	6
Key features	8
Texture Painting	8
Interactive Gradient Tool	11
Gradient Express Painting:	13
Dab Stencils	15
Glazing Brushes	17
Dropper Tool	19
Palette Drawers	20
Artists' Layouts	22
Brush Selector	22
Property Bars	22



A vibrant digital painting of a woman's face, rendered with intricate textures and a rich color palette of pinks, purples, and oranges. She wears a crown of colorful flowers and has delicate, swirling patterns on her skin. The background is a complex, layered composition of organic and geometric forms.

1

Introducing Corel® Painter® 2017

Corel® Painter® 2017 is the world's most expressive digital art studio. It's like no other paint program on the market. There are many reasons why creative professionals and digital artists have chosen to make Corel Painter an integral of their design process, but two really stand out — painting tools and workflow features.

The power and diversity of its revolutionary digital painting tools is what makes Corel Painter the paint program that all others are measured against. Its expansive collection of painting tools not only offers an unrivaled ability to emulate traditional art, but also gives users the power to redefine what's possible in digital art.

Each version of Corel Painter has pushed the envelope by consistently adding new tools and features that quickly became the benchmark in the digital art world — Particle Brushes, Dynamic Speckles, and Audio Expression to name just a few from recent releases. Corel Painter 2017 continues this push to deliver groundbreaking features that aren't simply mind-blowing, but also incredibly powerful in a range of creative sectors and workflows.

The addition of Texture Painting helps artists seamlessly integrate an array of surface textures into their work unlike ever before. New Dab Stencils offer infinite possibilities by letting you intelligently mask a brush dab using a variety of stenciling media like papers or flow maps. And Glazing Brushes give you an unprecedented level of control over the evolution of your painting using velvety, transparent translucent paint transitions just like the Renaissance masters.



Features that simplify and accelerate artistic workflows are another reason that Corel Painter is a staple in so many creative sectors. A loyal and passionate user base actively participates in Painter's development by offering constructive feedback, and sharing their work, tools and methods. These insights and suggestions drive so many of these workflow innovations. That's why Corel Painter 2017 delivers enhanced property bars that put the most important brush controls at your fingertips ensuring that you spend as much time as possible doing what you do best — painting. There's also new Artists Layouts, collections of pre-defined user-interface arrangements, tailored for a variety of digital art workflows that display only the relevant palettes and tools in a click. And new Palette Drawers let you combine the tools and content you need in a convenient grouping, which you can minimize in a click when you need more workspace.

Give it a try, and we're sure you'll agree — Corel Painter 2017 is changing what's possible in digital art.

2

Artist profiles

Concept artists

Corel Painter 2017 offers concept artists a powerful and versatile feature set for every stage of their workflow. The ability to add randomness to brush variants gives concept artists the freedom to discover a world of creative possibilities as they paint with tools that have a traditional look and feel. Once the right look has been pinpointed, Corel Painter 2017 has the tools that they need to quickly refine even the most minute detail of every element of their concepts.

Illustrators

Illustrators count on Painter because of the power and diversity of a toolset that lets them work with precision, speed, and confidence. Whether creating a character or publishing an illustration, package design, or promotional piece, Corel Painter 2017 has the art tools illustrators need to bring their vision to life and immerse their audience in the story. It's the perfect medium for visually capturing and expressing their ideas, from initial sketches to fully rendered designs. No other program allows them to transition seamlessly from traditional methods to the world of digital art quite like Corel Painter. Whatever real-world medium they've counted on before, there's a Painter equivalent that lets them create just like they always have, only faster.



Manga and Comic artists

A wide range of sketching, drawing and inking tools make Corel Painter 2017 the best digital art program for manga and comic artists to develop a personal style that stands out. So much of their work calls on traditional methods that Painter is renowned for emulating, from watercolor to oil to liquid ink. Painter has the tools that they need to create clean, crisp lines, bold effects, and subtle shading. Often working to aggressive deadlines, they know they can count on a comprehensive set of composition and symmetry tools and intuitive color management features. There's no other tool on the market that gives them the power to build up a concept and then bring it to life in living color with such impact.

Fine artists

Corel Painter 2017 provides the most natural way to transition from traditional to digital art on-the-market. Fine artists can easily combine classic art practices and time-honored techniques with state-of-the-art Natural-Media technology to create digital art that's just as impressive as what they can create on a physical canvas. Corel Painter 2017 can save them valuable time thanks to the ability to undo mistakes in a way that only a digital art studio allows. What's more, there's no toxic fumes or costly art supplies.

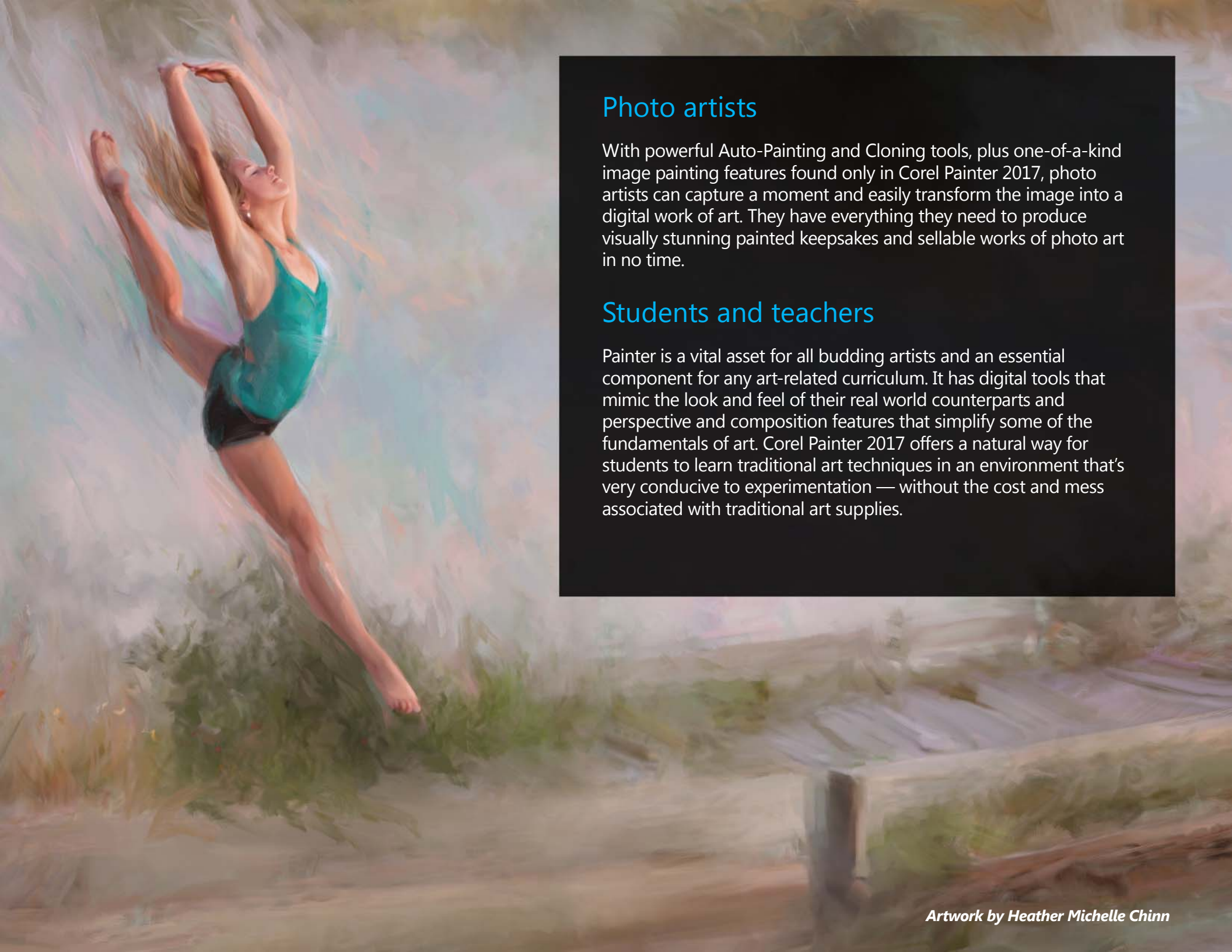


Photo artists

With powerful Auto-Painting and Cloning tools, plus one-of-a-kind image painting features found only in Corel Painter 2017, photo artists can capture a moment and easily transform the image into a digital work of art. They have everything they need to produce visually stunning painted keepsakes and sellable works of photo art in no time.

Students and teachers

Painter is a vital asset for all budding artists and an essential component for any art-related curriculum. It has digital tools that mimic the look and feel of their real world counterparts and perspective and composition features that simplify some of the fundamentals of art. Corel Painter 2017 offers a natural way for students to learn traditional art techniques in an environment that's very conducive to experimentation — without the cost and mess associated with traditional art supplies.



3

What's included?

Main application

- Corel Painter 2017, Mac OS® and Windows® versions

Content

- Libraries of unique brushes, gradients, nozzles, patterns, and paper textures

Documentation

- HTML Help (Windows) and Apple Help (Macintosh®) files
- Online User Guide and Getting Started Guide (PDF)
- Welcome Screen
- [youtube.com/paintertutorials](https://www.youtube.com/paintertutorials)
- painterartist.com

Minimum system requirements

Mac OS® version:

- Mac OS® X 10.11, 10.10 or 10.9 (with latest revision)
- Multi-core Intel® with 64-bit support
- 2 GB of RAM (8 GB or higher recommended)
- 750 MB of hard disk space for application files
- Mouse or tablet
- 1280 × 800 screen resolution (1920 × 1080 recommended)
- DVD drive (required for box installation)
- Safari v7 or higher

Windows® version:

- Microsoft® Windows® 10 (64-bit), Microsoft Windows 8.1 (64-bit), or Windows 7 (64-bit), with the latest Service Packs
- Intel® Core 2 or AMD Athlon™ 64 processor (2 GHz or faster)
- 2 GB of RAM (8 GB or higher recommended)
- 1 GB of hard disk space for application files¹
- Mouse or tablet
- 1280 × 800 screen resolution (1920 × 1080 recommended)
- DVD drive (required for box installation)
- Microsoft® Internet Explorer® 11 or higher

Upgrade eligibility: To purchase the upgrade version of this product, you must own a previous licensed version of Painter. Your original serial number will be required. Please note that upgrade eligibility excludes Trial, Academic, OEM and Not for Resale (NFR) versions.

1. Additional space may be required for Microsoft .NET Framework 4.6





4

Key features

Corel Painter 2017 is the world's most authentic digital art studio.

Painting tools

Painter is famous for an expansive collection of painting tools that inspire artists and give them the freedom to create without boundaries.

New! Texture Painting: This groundbreaking new brush category with source-blending technology makes it easy to integrate complex textures into your work. Whether you're aiming for a look that is more lifelike or one that's completely futuristic, or you want to make a digital painting look authentically timeworn, Texture Painting offers limitless possibilities.

For concept artists and character designers, perfecting the look and feel of every element of their work is critical. Maybe a face needs just the right weather-beaten complexion, a car needs to look like it was driven to hell and back, or a landscape has to be otherworldly — there's a Texture brush designed specifically for the task at hand.

Texture brushes can yield a range of stunning results. You can easily give grayscale images, photos, or digital paintings a totally new look and feel. You can even take a 2D rendering of a 3D model and add the perfect surface or touch up the texture work with Painter tools.



Texture Painting doesn't simply modify brushstroke opacity as you paint. It lets you intelligently blend a texture into existing content using a range of stylus expressions, such as pressure. It respects the transparency of the selected texture, giving you full control of when, where, and how much texture is used.

You start by choosing or creating a texture and pairing it with brushes designed specifically for adding texture. And by combining Texture brushes, flexible brush customization options, and the ability to capture and import your own textures, you can add any number of surfaces styles to your work.

You can even add Dab Stencils, grain, and smudging to the brushes with all the speed, precision and control you expect from Painter. In addition, you can make your own custom textures from scratch or by modifying a preset texture.

There's a variety of options for how to blend the texture with the existing paint, luminance and color. After you've tried a few Texture brushes and experimented with their settings, you'll really get an idea of their potential.

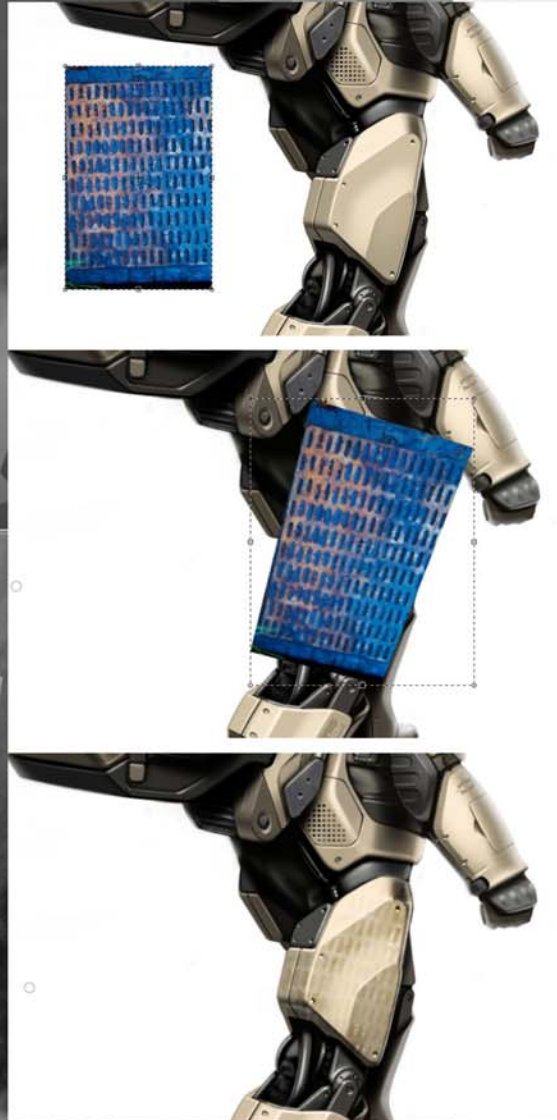


A 3D model is rendered into a 2D bitmap image (left); Texture is added to the image in Corel Painter (right).



Give it a try


Painting with texture





1 Open the sample file **Texture_paint.png**.

2 Choose **Window ▶ Brush Selector Panel** to display the Brush Selector as a floating panel.

3 Click a Texture brush category and a brush variant.

4 On the property bar, click the **Texture** selector , and click a texture.

5 Click the **Show Texture** button  on the property bar to display a representation of the texture onscreen to help you manipulate it in relation to the underlying brushstrokes or image. You can control the transparency of the texture display by moving the **Visibility** slider.

6 Click the **Move and Size** button .

Drag the texture to reposition it or drag a corner handle to resize. You can also skew, rotate, or distort the texture. If you customize a texture that you want to reuse, click **Save As** in the **Transform Textures** panel.

7 Experiment with the Texture brush variants.

There are variants that cover the underlying pixels, blend with the image, add color texture as it blends, smudge texture as you blend, or uses the color or luminance information of the texture.



New! Interactive Gradient Tool: In Corel Painter 2017, getting stunning painted backgrounds is easier than ever with the new Interactive Gradient tool. It lets you quickly create and edit a gradient to give paintings a range of depth and lighting variations. If you're just starting a new document, you can kick-start things by filling the background with a gradient and experimenting with different preset styles. Or if you have an existing sketch or painting, you can apply and tweak a gradient in context of your work with edit nodes. Corel Painter 2017 has a library of gradients to choose from, or you can create your own and save it for reuse.













The Interactive Gradient tool lets you achieve precise shading and lighting variations.



Give it a try

Applying a gradient interactively

- 1 Choose **File** ▶ **New** to create a new document.
- 2 Click the **Interactive Gradient** tool  in the toolbox.
- 3 Click the **Gradient Selector**  on the property bar, and click a gradient fill thumbnail.
- 4 Choose a gradient on the property bar:
 - **Linear Gradient** 
 - **Radial Gradient** 
 - **Circular Gradient** 
 - **Spiral Gradient** 
- 5 Click the **Padding** button  on the extended property bar, and choose one of the following options:
 - **Extend**  — to extend the color of the start and end nodes
 - **Mirror**  — to mirror a gradient on either side of the start and end nodes
 - **Repeat**  — to repeat a gradient on either side of the start and end nodes
- 6 Click and drag on the canvas.

The direction and size of the gradient depend on where you first click, the distance that you drag, and the direction in which you drag. Each color in the gradient fill is represented by a square node on the interactive gradient control.
- 7 Adjust the position of the gradient by dragging the start or end node.

You can add a color to the gradient by clicking anywhere along the interactive gradient control and choosing a color.

New! Gradient Express Painting: When a blank white canvas is blocking your creativity or you need a back-drop for a new concept design, the new Express Paint feature allows to create stunning gradients in a matter of seconds. It allows you to apply a wide variety of painting styles automatically to any gradient, quickly creating the inspiration you need in virtually any composition.




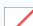



Artwork by Fiona Sansom



Give it a try

Auto-painting backgrounds with gradients

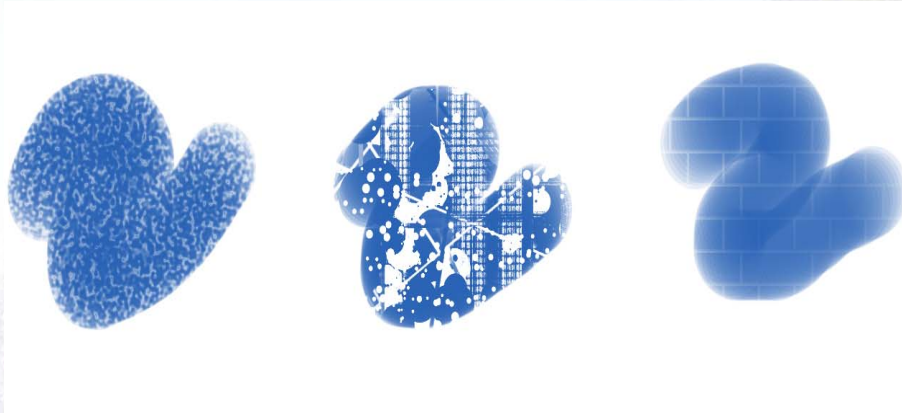
- 1 Click the **Interactive Gradient** tool  in the toolbox.
- 2 Click the **Gradient Selector**  on the property bar, and click a gradient fill thumbnail.
- 3 On the property bar, set gradient options.
Make sure the **Edit nodes** check box on the property bar is enabled.
- 4 Click the **Padding** button  on the extended property bar, and choose one of the following options:
- 5 Click and drag on the canvas.
- 6 Click the **Express Paint** button  on the property bar, and choose an auto-painting style.
To preview the paint effect in the image window, enable the **Preview Effect** option.
- 7 Click the **Commit Gradient** button  on the property bar.



Gradient Express Painting lets you to apply a wide variety of painting styles automatically to any gradient.



Enhanced! Dab Stencils: This new feature gives artists more power to craft and create expressive, unique brushstrokes. Dab Stencils let you change the brushstroke opacity before you paint, basing it on the active paper, flow map or texture. You can fine-tune exactly how much source texture to reveal as you paint and link Dab Stencils to a variety of real-time stylus input factors. And using them with the new Texture Brush variants gives you even greater control over the look and feel of your brushstrokes.



Dab Stencils give you full control over brushstroke opacity based on the active paper, flow map or texture.



Give it a try

Applying a dab stencil to a brush variant

1 Choose a Dab Stencil brush variant or a brush variant that supports Dab Stencil.

Dab Stencil works well with brushes that use any of the following dab types: Captured, Dynamic Speckles, Circular, Computed Circular, and Static Bristle.

2 Choose **Window ▶ Brush Control Panels ▶ Dab Stencil**.

3 Choose a stencil option from the **Source** list box.

You can choose a texture, paper, or flow map.

4 Click the selector button next to the **Source** list box, and choose the flow map, paper texture, or texture you want to use as a source.

5 Adjust any of the following sliders:

- **Strength** slider — to set the maximum level of opacity that the stencil applies to the dab
- **Min Strength** slider — to set the minimum level of opacity that the stencil applies to the dab
- **Strength Jitter** slider — to set the range of opacity variability of the dab stencil based on the maximum and minimum strength settings
- **Smoothness** slider — to smooth the jitter of opacity variability of the dab stencil

6 Paint on the canvas.

New! Glazing Brushes: Some of the best Painter developments have been the result of user suggestions. Here's another one — Glazing Brushes. They let you control the evolution of your painting using velvety, translucent paint transitions just like the Renaissance masters. Glazing Brushes deliver stroke-level opacity, so the paint of each brushstroke is applied independently. The paint that each dab deposits on the canvas builds up smoothly from a minimum to a maximum. This creates a smooth blend between colors, with no unwanted colors where dabs overlap. You'll really see Glazing Brushes at their best when you fluctuate stylus pressure in a single brushstroke.



Glazing Brushes allow you to work with very high levels of transparency and paint with light, semi-transparent brushstrokes.



Give it a try

Painting with Glazing brushes

- 1 Choose a Glazing brush variant from the Brush Selector.
- 2 Choose **Window** ▶ **Brush Control Panels** ▶ **Glazing**.
- 3 Choose a merge mode from the **Merge** list box.
- 4 Adjust any of the following sliders:
 - **Glazing** slider — to set the maximum level of opacity in a brushstroke
 - **Min Glazing** slider — to set the minimum level of opacity in a brushstroke
 - **Glazing Jitter** slider — to set the range of opacity variability in a brushstroke
 - **Smoothness** slider — to smooth the jitter of opacity variability in a brushstroke
- 5 Choose an option from the **Expression** list box to link brushstroke opacity to an expression such as pressure, tilt, direction to vary the opacity in a brushstroke.
- 6 Paint on the canvas.



Enhanced! Dropper Tool: Corel Painter 2017 makes it easier than ever to sample color. Sometimes what appears to be a solid-colored area is actually subtly shaded or dithered, so what you see onscreen isn't what you get when you sample a single pixel. Now you can get the color that you're seeing with new Dropper tool options that let you average the colors of pixels in larger sample areas, ranging from 3×3 to 101×101 pixels. What's more, you can sample a color from the active layer or from all visible layers.

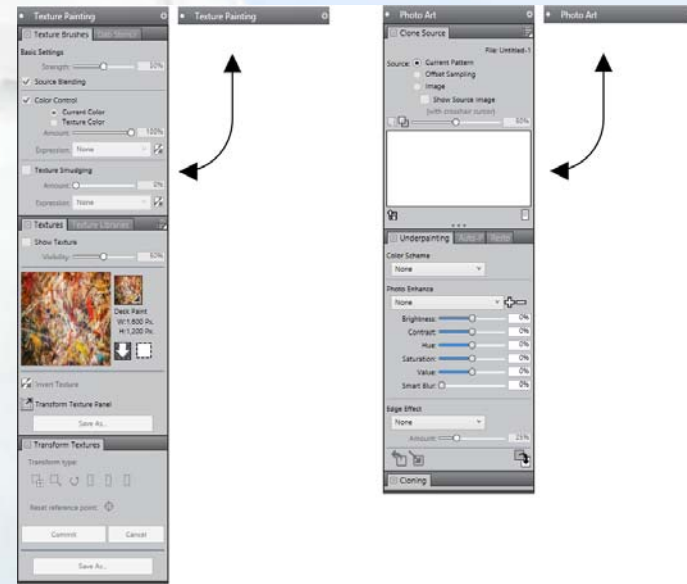


Artwork by Heather Michelle Chinn

Workflow tools

Painter is famous for an expansive collection of painting tools that inspire artists and give them the freedom to create without boundaries.

New! Palette Drawers: Having the tools that you need right at your fingertips isn't only important for your productivity, it's critical for your creativity. That's why Corel Painter 2017 introduces Palette Drawers. This new workflow enhancement strikes the perfect balance between uncluttering your workspace and keeping essential tools handy by letting you combine panels, custom palettes in a convenient grouping — for a particular workflow or project — so the controls and settings are just a click away. And when you're not using a Palette Drawer, it collapses, freeing up your work area.



Palette drawers let you combine panels and custom palettes in a convenient grouping that can be opened and closed in a click.



Give it a try

Creating palette drawers

1 Group panels into a palette by dragging a panel by its tab to another open panel to create a group.

2 Click the **Palette Drawer** toggle button  on the palette header bar, and click **Palette Drawer**.

You can name a palette drawer by clicking the **Palette Drawer** toggle button bar, clicking **Rename**, and typing a new name.

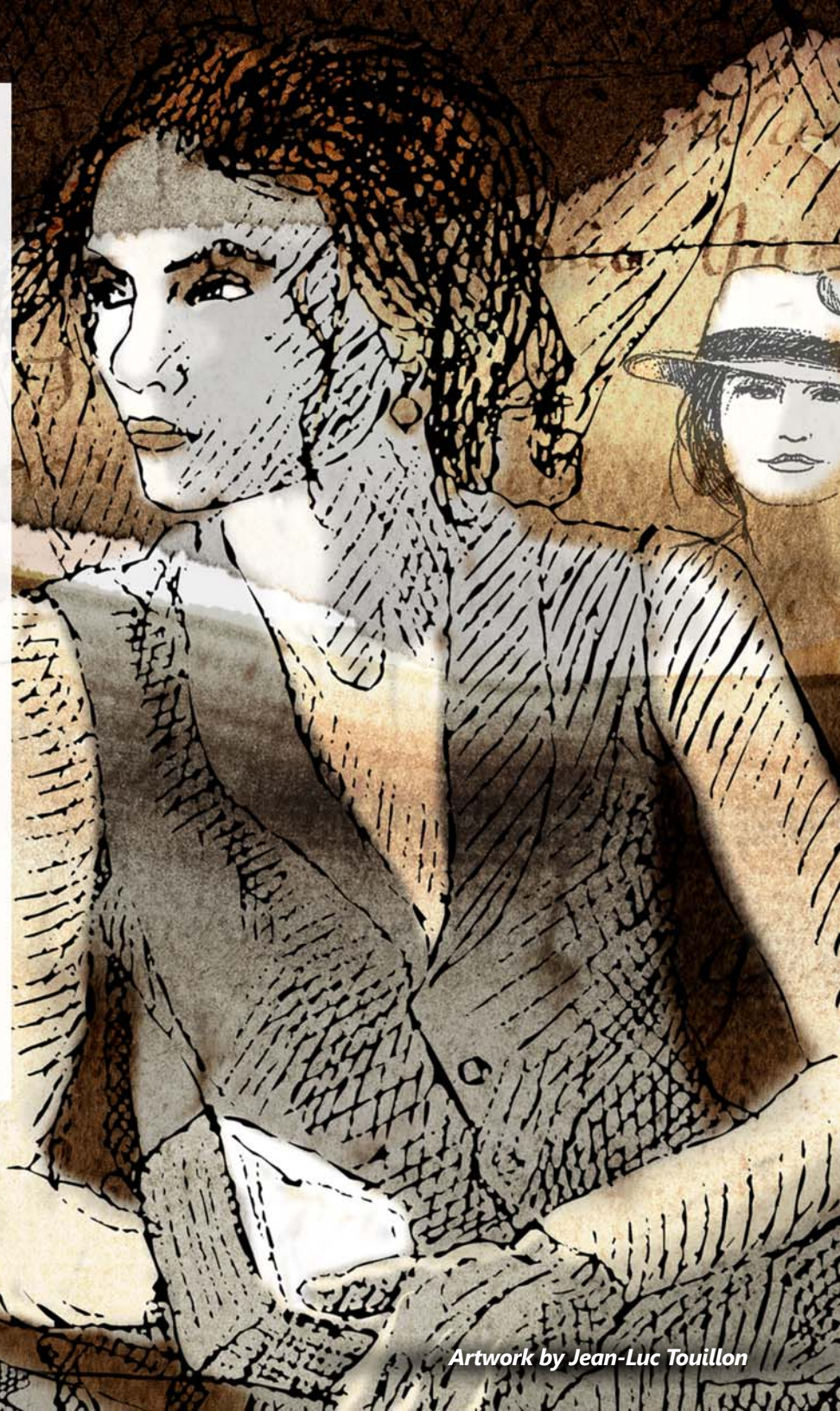
You can collapse a palette drawer by double-clicking the palette header bar.

New! Artists' Layouts: Just getting started with a new project in concept art, fine art, illustration, photo-art or Manga? This collection of pre-defined user-interface arrangements is designed to kick-start a variety of digital art workflows by displaying only the relevant palettes and tools.

There's even one that displays only minimal UI, freeing up space for tablet users. You can also choose the two workspace layouts that you use most often and quickly switch between them to suit the current task or the display mode of your device using the Quick Switch feature.

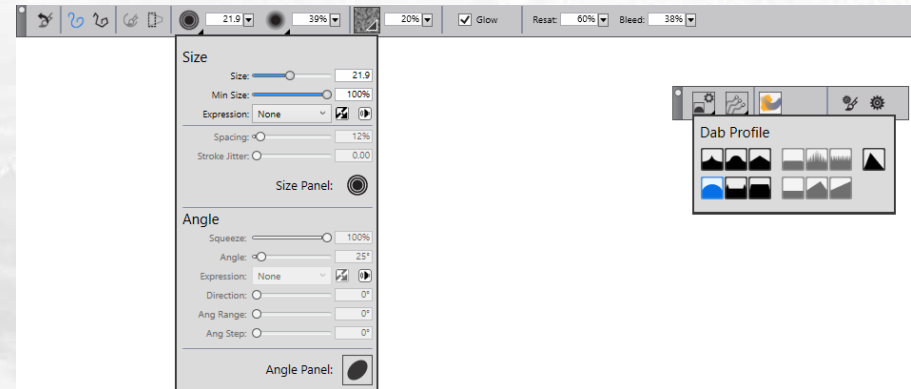
Enhanced! Brush Selector: Every Painter release aims to deliver a better user experience. Sometimes "better" means different things to different people. But one thing that we can all agree on is that faster means better. That's why Corel Painter 2017 gives you quicker and easier access to one of the things that makes Painter an industry leader in digital painting — our unrivaled selection of brushes. To that end, you can now display the Brush Selector as a panel. That way, your recently used brush variants are at your fingertips, the entire Brush Library is readily accessible, and you can position it wherever it suits your workflow. And the latest brush packs are available from directly within the Brush Selector.

Enhanced! Property Bars: Optimizing brush and tool settings is important. But time spent tweaking controls is time not spent painting. That's why the property bars have been enhanced to make it easier to adjust brushes.



Artwork by Jean-Luc Touillon

When the Brush tool is active, the enhanced property bar gives you quick access to a range of relevant brush-related panels, saving you time clicking through menus. It also lets you choose new dab profiles on the fly, select media like paper, and view brushstroke info.



Gain instant access to important brush controls thanks to the enhanced property bars.

About Corel

Corel is one of the world's top software companies providing some of the industry's best-known graphics, productivity and digital media products. Boasting the most comprehensive portfolio of innovative software, we've built a reputation for delivering solutions that are easy to learn and use, helping people achieve new levels of creativity and productivity. The industry has responded with hundreds of awards for innovation, design, and value.

Used by millions of people around the world, our product lines include CorelDRAW® Graphics Suite, Corel DESIGNER®, CorelCAD™, Corel® Painter®, Corel® PaintShop® Pro, Corel® VideoStudio®, and Corel® WordPerfect® Office. For more information on Corel, please visit www.corel.com.

Media Contact

Alex Brazeau

Public Relations Manager

Corel Corporation

613-728-0826 x1679

alex.brazeau@corel.com

Copyright © 2016 Corel Corporation. All rights reserved.

Corel® Painter® 2017 Reviewer's Guide

Protected by U.S. Patents 5652880; 5347620; 5767860; 6195100; 6385336; 6552725; 6657739; 6731309; 6825859; 6633305; Patents Pending.

Product specifications, pricing, packaging, technical support and information ("specifications") refer to the retail English version only. The specifications for all other versions (including other language versions) may vary.

INFORMATION IS PROVIDED BY COREL ON AN "AS IS" BASIS, WITHOUT ANY OTHER WARRANTIES OR CONDITIONS, EXPRESS OR IMPLIED, INCLUDING, BUT NOT LIMITED TO, WARRANTIES OF MERCHANTABILITY, SATISFACTORY QUALITY, MERCHANTABILITY OR FITNESS FOR A PARTICULAR PURPOSE, OR THOSE ARISING BY LAW, STATUTE, USAGE OF TRADE, COURSE OF DEALING OR OTHERWISE. THE ENTIRE RISK AS TO THE RESULTS OF THE INFORMATION PROVIDED OR ITS USE IS ASSUMED BY YOU. COREL SHALL HAVE NO LIABILITY TO YOU OR ANY OTHER PERSON OR ENTITY FOR ANY INDIRECT, INCIDENTAL, SPECIAL, OR CONSEQUENTIAL DAMAGES WHATSOEVER, INCLUDING, BUT NOT LIMITED TO, LOSS OF REVENUE OR PROFIT, LOST OR DAMAGED DATA OR OTHER COMMERCIAL OR ECONOMIC LOSS, EVEN IF COREL HAS BEEN ADVISED OF THE POSSIBILITY OF SUCH DAMAGES, OR THEY ARE FORESEEABLE. COREL IS ALSO NOT LIABLE FOR ANY CLAIMS MADE BY ANY THIRD PARTY. COREL'S MAXIMUM AGGREGATE LIABILITY TO YOU SHALL NOT EXCEED THE COSTS PAID BY YOU TO PURCHASE THE MATERIALS. SOME STATES/COUNTRIES DO NOT ALLOW EXCLUSIONS OR LIMITATIONS OF LIABILITY FOR CONSEQUENTIAL OR INCIDENTAL DAMAGES, SO THE ABOVE LIMITATIONS MAY NOT APPLY TO YOU.

Corel, the Corel logo, CorelDRAW, Corel DESIGNER, CorelCAD, PaintShop Pro, Painter, VideoStudio, and WordPerfect are trademarks or registered trademarks of Corel Corporation and/or its subsidiaries in Canada, the U.S., and/or other countries.

Other product, font, and company names and logos may be trademarks or registered trademarks of their respective companies.