



# PaintShop<sup>®</sup> Pro X8



Reviewer's Guide

# Contents

- 1 | Introducing Corel PaintShop Pro X8 ..... 1
- 2 | What's included? ..... 3
- 3 | Top new and enhanced features ..... 5
- 4 | Defining features ..... 11

# Introducing Corel PaintShop Pro X8



The world has become strikingly visual, at work and at home. Almost every time we use our devices, we see interfaces and a wide variety of designs—visual expressions made possible by creative software.

This is the world of PaintShop Pro. Whether it's editing photos, designing web graphics, or making scrapbook pages and other projects, PaintShop Pro represents something unique — software that's inviting and affordable, yet delivers power, speed, and creative capabilities that rival the 800-pound gorilla of photo editing. We're happiest when we're able to deliver tools to our customers that are innovative, easy-to-use, and help people be more productive. PaintShop Pro X8's new text wrapping feature is a good example of an innovative feature inspired by listening and responding to our users. Wrapping text within a shape or selection is a task that can be frustrating in other photo software, and our goal was to make it fast and simple, so anyone, regardless of skill level or profession, can get the job done faster — no monthly fee required.

For your passion or profession, PaintShop Pro is here for you.

Greg Wood  
Product Manager, Corel PaintShop Pro

## PaintShop® Pro customer profiles

Here's a glimpse of the people who are driving PaintShop Pro's success.

### Photographers

First and foremost, PaintShop Pro is designed from the ground up for the photo enthusiast. Whether they're just starting out as hobbyists with their first DSLR, prosumers, or photo enthusiasts, they need tools that help them achieve their creative vision. That might be the quick adjustment of 1000 photos from a wedding shoot, or it might be detailed restoration of a unique old photograph. PaintShop Pro provides the comprehensive ability to edit, make quick adjustments and manage an entire photo collection within one product.

### Graphic Designers and Creative Consumers

PaintShop Pro's layers, vector tools, and painting and drawing tools are ideal for many graphic designers—whether at home or at work.

Graphic designers tend to live in our Edit workspace and use layers to make a variety of compositions, including scrapbook content, posters, web graphics and more. Support for vector illustration is key here, with use cases similar to what we see with PhotoShop.

We often emphasize photography with PaintShop Pro, but design tools are part of PaintShop's "DNA", from its earliest development. Graphic designers produce content for many projects and want tools that help them express their creativity. Whether they're working photographers, graphic design professionals, video producers, or web professionals, they want a photo editor that lets them work with vector and raster layers, supports industry-standard file formats, and gives them powerful creative options.

Creative consumers produce content to share with friends and family. They want a photo editor that's easy to use, stays out of their way, and gives them access to a wide range of features and effects.

### Business and Education

Whether in a small business or a large enterprise, PaintShop Pro is enormously valuable at work. The photo editing capabilities, design tools, and ability to open a wide variety of image formats, make it a versatile application that is likely to generate an immediate return on its moderate price.

Small business owners, independent or professional marketers, and social media specialists want a photo editor that fits their budget and lets them quickly produce high-quality graphics in-house.

Whether cleaning up images in engineering firms, creating graphics for social media, or enabling students to create a wide variety of creative content, we know that the volume licensing and network deployability has made PaintShop Pro an excellent choice for business and education settings.

# What's included?

# 2



## Application

- **Corel® PaintShop® Pro X8:** This powerful, versatile image-editing software helps anyone produce stunning photos and designs. It offers a wealth of features that help you organize, edit, and share your photos and artistic creations.
- **32- and 64-bit versions:** PaintShop Pro X8 is available in 32- and 64-bit versions.

## Documentation

- Online Help, Learning Center palette
- PDF User Guide
- In-product link directly to video and text tutorials in the Discovery Center
- Getting Started windows provide an overview of some tools and features
- PDF Scripting Guide, available for download

## Minimum system requirements

- Windows® 10, Windows 8/8.1, Windows 7 with latest service packs installed (32-bit or 64-bit editions)
- Intel® or AMD 1.5 GHz or faster processor with SSE2 support (multi-core processor recommended)
- 2 GB of RAM (4 GB recommended)
- 1 GB of free hard disk space (2 GB recommended)
- 1024 × 768 resolution, 16-bit color display (1366 × 768 resolution, 24-bit or higher color display recommended)
- DirectX® 9 or higher compatible video adapter with latest driver
- Internet connection required for accessing online features and video tutorials

- Windows-compatible CD- or DVD-ROM drive for installation

## File format support

- **Input:** AI, BMP, CAL, CALS, CGM, CLP, CMX<sup>1</sup>, CT, CUR, CUT, DCX, DIB, DRW\*, EMF, EPS, GIF, HDP, HGL\*, HPG\*, IFF, IMG, J2C, J2K, JIF, JP2, JPC, JPE, JPEG, JPG, JPS, JPX, MAC, MPO, MRW, MSP, PBM, PCD\*, PCT, PCX, PDF, PGL\*, PGM, PIC, PICT, PNG, PNS, PPM, PS, PSD, PSP (PSP image files), RAS, RAW, RIF, RLE, SCT, SVG, SVGZ, TGA, TIF, UFO, WBM, WBMP, WDP, WEBP, WMF, WPG\*

RAW file support from more than 300 camera models including 3FR, ARW, CR2, CRW, DCR, DNG, K25, KDC, NEF, NRW, ORF, PEF, RAF, RW2, SR2, SRF, X3F

- **Output:** BMP, CAL, CALS, CLP, CUT, DCX, DIB, EMF, EPS, AI, PS, GIF, HDP, WDP, IFF, IMG, JP2, J2C, J2K, JPC, JPX, JPG, JIF, JPE, JPEG, MAC, MSP, PBM, PCX, PGM, PIC, PPM, PNG, PSD, PSP (PSPIMAGE FILES), RAS, RAW, RIF, RIFF, RLE, SCT, CT, JPS, PNS, TGA, TIF, TIFF, WBMP, WBM, WEBP, WMF
- **Brush:** PaintShop Pro Brush (.pspbrush), Adobe Photoshop Brush (.abr), Jasc Brush (.jbr)

---

1. CMX, DRW, HGL, HPG, PCD, PGL, and WPG formats supported only with 32-bit installation





## Top new and enhanced features

Corel® PaintShop® Pro X8 is powerful image-editing software that helps anyone produce stunning photos and creative designs.

**New! Text wrapping:** Corel PaintShop Pro X8 makes it easy to use text as a design element in your creative projects. New **Text Wrapping** lets you wrap text inside any vector shape or selection. Simply choose your shape or draw your selection using any of the selection tools, and type your text. The text automatically wraps within the shape. This is an ideal effect for posters, scrapbooking, brochures, collages, websites and other projects.



*You can wrap text in selections (top) and vector shapes (bottom).*

### Give it a try

#### To wrap text within a shape

- 1 In the **Edit** workspace, click a selection tool or a vector shape tool and in the image window, drag to create a selection or vector shape.
- 2 Click the **Text** tool and click inside the selection or vector shape, at the start position for your text.
- 3 Type your text.
- 4 The text automatically wraps to stay within the shape or selection.

If there is too much text for the space, the extra text appears outside the shape or selection.

**New! Magic Move tool:** Accelerate editing with **Magic Move**, a new content-aware tool that automatically replaces the background when you move an object or person. Simply select an area and drag it to a new position. The empty area left behind is automatically filled to match the surrounding background.



*You can move people or objects with the Magic Move tool.*


## Give it a try

### To move an image area with Magic Move

- 1 In the **Edit** workspace, click a selection tool and in the image window, select the area that you want to move.

**Note:** You don't have to be precise—leaving a buffer area around the object you select produces better results.

**Tip:** On the Tool Options palette, increase the **Feather** value to 5-20 to improve edge results.

- 2 On the Tool Options palette, click **Magic Move** .
- 3 In the image window, drag the selected area to a new position.

The remaining empty area is filled with a content-aware fill that matches the surrounding background.

You can fine-tune the results with the **Clone Brush** or one of the retouch brushes.

**Enhanced! Batch processing:** Save time by applying common actions to multiple photos with the new **Batch Process** wizard. Resize, add watermarks and picture frames, apply scripts, and control the file names, formats, security-related information, and more — the wizard makes it easy.



*You can save time with the Batch Process wizard.*

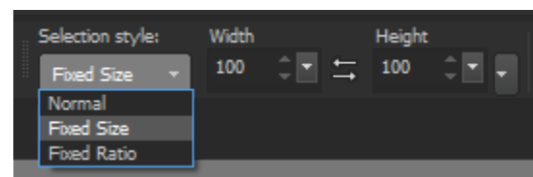
## Give it a try

### To use the Batch Process wizard to add watermarks

- 1 Click **File** ▶ **Batch Process**.
  - 2 Click **Add**, choose some photos, and click **Next**.
  - 3 On the **Batch Actions** page, click **Watermark**.
  - 4 In the **Visible Watermark** box, browse to the existing logo or text file that you want to use as a watermark.
  - 5 In the **Visible Watermark** box, choose the settings you want, and click **OK**.
  - 6 Choose any additional batch actions.
- Tip:** If you add scripts, consider enabling the **Silent Mode** check box to avoid pop-up dialog interruptions requesting user input.
- 7 Click **Next**, and choose the **Output Settings** you want.
  - 8 Click **Start**.

The watermark and any other batch actions are applied to all the photos.

**New & Enhanced! Selection tool options:** Fast and accurate selection tools are a must for any photo editor. The enhanced **Smart Selection Brush** now includes a **Tolerance** setting for more precise selections across areas that are close in tone or hue. New **Selection Style** options for the **Selection Tool** let you define a selection size by typing height and width values, or you can define a fixed aspect ratio for the selection. You can also choose from a list of popular aspect ratios and resolutions.



*With PaintShop Pro X8, you can create more precise selections.*

**Enhanced! Power and speed:** The new Corel PaintShop Pro includes performance gains



that save you time and make editing tasks more responsive and enjoyable:

- Faster brushes for a more responsive feel — Enjoy speed gains of 40%–120% for brushes, including **Paint Brush**, **Air Brush**, retouch brushes (**Dodge**, **Burn**, **Softener** and others), and art media brushes (**Oil Brush**, **Chalk**, **Marker** and others)
- Larger maximum brush size — Cover more area, more quickly with an increased maximum brush size of 3,000 pixels
- Enhanced **Smart Edge** — See up to 50% faster performance when using the Smart Edge feature, which works with several tools help keep your brushstrokes “inside the lines”
- Faster saving — our native PaintShop Pro image file format (\*.pspimage) saves up to 50% faster, to keep you in your creative groove

### **New! High resolution 4K monitor support:**

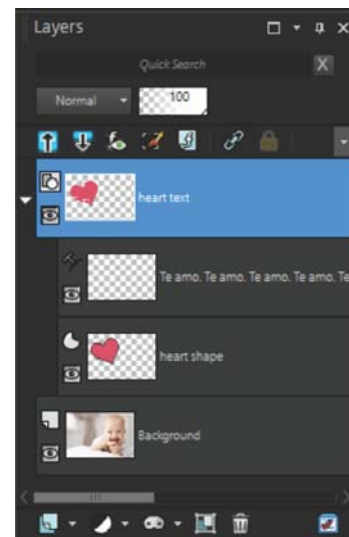
Pair PaintShop Pro X8 with a high resolution monitor for the best-looking PaintShop Pro ever. See each detail, read more clearly and easily, and appreciate every aspect of your photo or composition in a beautifully rendered high resolution interface. All-new icons and enhanced workspaces are compatible with Ultra High DPI displays (up to 250% zoom with 4K resolution).



*PaintShop Pro X8 has been optimized for higher resolution monitors.*

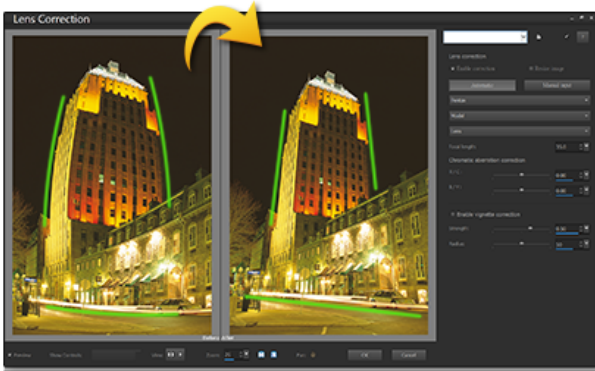
**New & Enhanced! Layer workflow:** Layers are fundamental to advanced photo editing, compositing and graphic design. The following features make it easier to work with multi-layer projects:

- **Quick Search** — find the right layer in seconds when you search for it by name. This is especially useful for projects with many layers
- **Merge layers** — merge selected layers or create a new layer from selected or visible layers
- **Expand or collapse all layer groups** — easily expand and view all layers in your project



*PaintShop Pro X8 offers more options for multi-layer projects.*

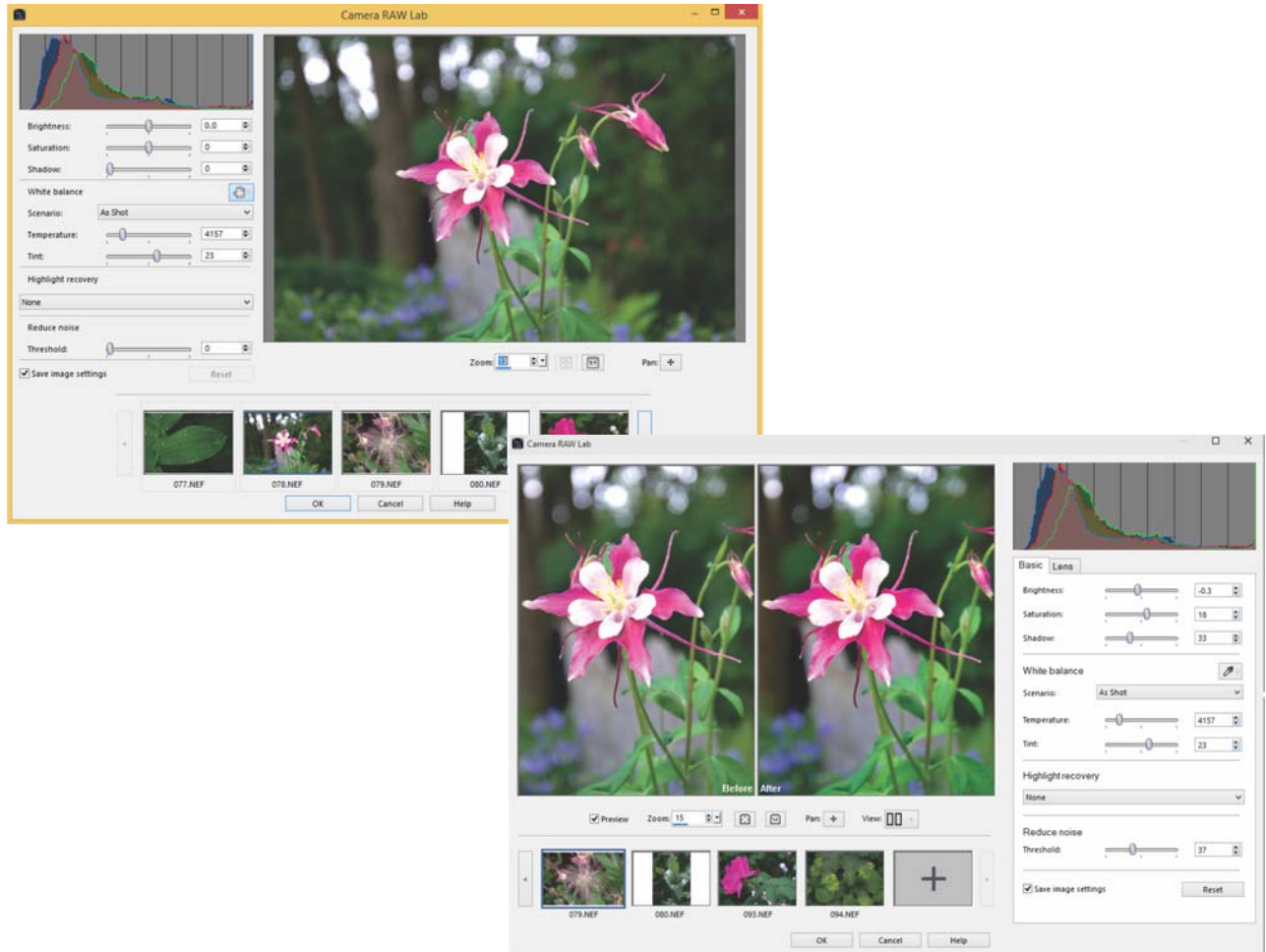
**New! Lens Correction:** You can correct the distortions, vignetting and chromatic aberrations that are commonly introduced by most camera lenses. Whether you’re in the **Edit** workspace or the **Camera RAW Lab**, you can apply **Lens Correction** tools automatically, taking advantage of the wide range of lens profiles included in Corel PaintShop Pro, or take full control and apply corrections manually.



*You can correct problems introduced by camera lenses.*

**Enhanced! Camera RAW Lab:** Inspired by insights from Corel PaintShop Pro users, the **Camera RAW Lab** offers an enhanced layout, including before and after views, and a bigger preview to make working with RAW images

easier. You can also add more photos without having to close the RAW Lab, and apply lens corrections. As always, we continue to add support for latest camera models.



*Camera RAW Lab in PaintShop Pro X7 (top) and PaintShop Pro X8 (bottom)*

**New! Enhancements suggested by our users:**

We love getting suggestions from Corel PaintShop Pro users. As part of our ongoing commitment to empower creativity, we have included the following improvements, suggested by our users:

- **Before/After** button in the **Adjust** workspace — quickly see what you have changed versus the original with a simple click
- **New Save behavior and Save As dialog box** — see and adjust compression settings to ensure that your image looks right
- **Swatches in the Material Properties window** — access all the swatches you have created more easily
- **Cutter Preview for Shape Cutter and Text Cutter** — a semi-transparent overlay lets you preview the area you are cutting before you apply your cutout

- **Gradient Preview** — now you can view gradient updates on your image as you make the changes in the Material Properties

# 4



## Defining features

Here's a snapshot of features that are frequently cited by users as the reason they chose PaintShop Pro.

workspaces that present tools and options for each intended task. The refined workspaces reduce clutter and duplication, which makes PaintShop Pro more welcoming and easier to use.


Three apps in one: With PaintShop Pro, you'll find dedicated Manage, Adjust, and Edit




*PaintShop Pro X8 provides dedicated workspaces that let you focus on the task at hand.*

## Give it a try

### Taking a workspace tour

- 1 In the **Manage** workspace, click the **Preview Mode**  button.

This switches the workspace from Thumbnail Mode to Preview Mode. To switch back, click the **Thumbnail Mode**  button.

The Manage workspace has four main components:

- **Navigation palette** — for finding and organizing your photos
  - **Preview area** — for viewing a single image or thumbnails of all images in the active folder
  - **Info palette** — for viewing and entering EXIF or IPTC data
  - **Organizer palette** — for selecting photos
- 2 At the top of the workspace, click the **Adjust** tab.

The Adjust workspace has four main components:

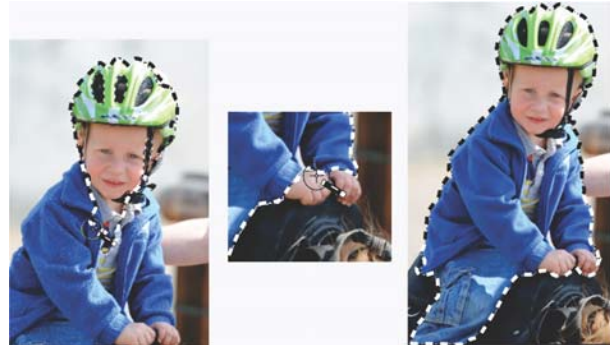
- **Adjust palette** — tools and controls for adjusting photos
  - **Preview area** — displays the photo selected in the Organizer palette
  - **Instant Effects palette** — preset effects
  - **Organizer palette** — for selecting photos
- 3 At the top of the workspace, click the **Edit** tab.

The Edit workspace has five main components:

- **Tools toolbar** — tools for painting, drawing, cropping, typing text, and performing other image editing tasks
- **Tool Options palette** — settings and controls for the active tool
- **Layers palette** — view, organize, and adjust image layers
- **Materials palette** — colors and materials for painting, drawing, filling, and retouching
- **Image window** — displays open files

**Smart Selection Brush:** This brush uses a photo segmentation engine that lets you select objects based on brushstrokes. Photo segmentation collects pixels into regions that correspond to separate surfaces, objects, or natural edges of an object. This means that you can simply paint over an object to select it, and you can build or reduce


the selection with additional brushstrokes. It's a fast, easy, and accurate way to isolate part of an image.



*You simply drag the Smart Selection Brush over an image area to create and refine a selection.*

## Give it a try

### Using the Smart Selection Brush

- 1 In the **Edit** workspace, open a photo that contains an object or person that you want to isolate.
- 2 On the **Tools** toolbar, click the **Smart Selection Brush** .
- 3 On the Tool Options palette, adjust the **Size** setting.

You can also adjust any of the following settings:

- **Mode** — specifies whether to replace, add, or remove an existing selection
  - **Feather** — softens the edges of a selection by specifying a fade width
  - **Anti-alias** — smoothens the edges of a selection by using transparency
- 4 Drag the brush across the image area that you want to select, and release to review the selection.

You don't need to be precise; the selection expands automatically to toward edges.

You can press **Shift** and drag to add to the selection, or press **Ctrl** and drag to remove the selection.


**Auto Selection tool:** This tool lets you enclose an image area in a bounding rectangle that automatically detects and snaps to edge. It's quick and simple, and does most of the work for you, which lets you focus on being creative.



*The Auto Selection tool automatically detects and snaps to the edges of an object area that you select.*

## Give it a try

### Using the Auto Selection tool

- 1** In the **Edit** workspace, open a photo that contains an object or person that you want to select.
- 2** On the **Tools** toolbar, click the **Auto Selection**  tool.
- 3** Drag across the image to enclose the area that you want to select, and release to view the auto-selection.

To redo the selection, press **Ctrl + D** and then reselect an area.

**Magic Fill:** Magic Fill is a content-aware feature that can make unwanted elements of your photos vanish. Use your favorite selection tools to select an area or object that you want to remove and apply Magic Fill to replace the selection with a background that matches the surrounding area — even when the surrounding area is textured or varied.



*You can make parts of a photo disappear with Magic Fill.*

**Shape Cutter and Text Cutter:** You can use vector shapes, such as Preset Shapes, to create cutouts that are filled with the background imagery. The effect is similar to using a clipping mask, except the cutout object is created as a new file with a transparent background—perfect for collage, scrapbook, or other creative photo projects.



*Shape Cutter*



*Text Cutter*

**HDR processing:** PaintShop Pro lets you explore HDR (High Dynamic Range) processing—a method that combines multiple photos of the same scene, shot at different exposures. HDR lets you access a broader tonal range to create a final image that can be breathtaking. PaintShop Pro includes **Exposure Merge**, for a full processing control, **Batch Merge**, for processing multiple HDR sets at one time, and an HDR effect, **Single RAW Photo**, that simulates an HDR effect using only one RAW photo.

**Exposure Merge** uses a three-step process:

- **Merge** — choose merge settings, apply custom editing to photos
- **HDR Adjustments** — make adjustments to merged HDR image
- **Fine-Tune** — refine the HDR image, reduce noise, sharpen, etc.



*You choose merge settings, make custom edits, and preview the merged alignment during the first step of Exposure Merge.*



## Give it a try

### **Step 1: Merging multiple HDR exposures**

- 1 In the **Manage** workspace, press **Ctrl** and then click to select the thumbnails of the photos you want to merge.
- 2 Click **File** ▶ **HDR** ▶ **Exposure Merge**.
- 3 In the Step 1: Merge window, choose a profile from the **Camera response curve profile** drop-list.  
If you are unsure, select **Auto Select**.
- 4 In the **Alignment** area, choose an alignment type from the **Method** drop-list.  
To crop edges that don't overlap, enable the **Auto crop** check box.
- 5 Click **Align**.  
To see the result, enable the **Preview Alignment** check box near the bottom of the panel.
- 6 If necessary, you can keep or remove specific areas from individual photos by using the controls in the **Custom editing** area.
- 7 Click **Process**.

*You can manually adjust the resultant HDR image or apply a preset during the second step of Exposure Merge.*



## Give it a try

### Step 2: Adjusting the HDR image

- 1 In the Step 2: HDR Adjustments window, perform any of the following actions to achieve the look you want:
  - in the **Presets** area, click a preset thumbnail
  - enable the **White Balance** check box, click the **Dropper** tool, and then click the image to set the white point
  - drag the **Temperature** slider to warm or cool the image, and drag the **Tint** slider to fine-tune the color
  - drag the **Contrast**, **Highlights**, **Midtones**, and **Shadows** slider to adjust the tone and contrast
  - drag the **Vibrancy** slider to saturate or desaturate the colors
  - choose **Creative detail** or **Natural detail** from the **Detail** drop-list, and then drag the respective sliders to adjust the amount of local detail

To focus on black-and-white processing, click the **B&W** tab.

To re-enable color processing, click the **Color** tab.

- 2 To save your HDR image for further editing, click **Create HDR file**, type a file name, and then click **Save**.
- 3 Click **Process**.

The settings are applied to the 16-bit image file in preparation for final output.



*You can apply photo fixes, color and contrast corrections, remove noise, and more during the final step of Exposure Merge.*

## Give it a try

### Step 3: Fine-tuning the HDR image

- 1 In the Step 3: Fine-Tune window, apply any of the following tools or adjustment options:
  - **Smart Photo Fix**
  - **White Balance**
  - **Brightness/Contrast**
  - **Fill Light/Clarity**
  - **Local Tone Mapping**
  - **High Pass Sharpen**
  - **Digital Noise Removal**
- 2 When you are satisfied, click **Save and close**.
- 3 In the **Save As** dialog box, type a file name, and then click **Save**.

**Scripting:** In combination with batch editing and custom presets, scripting can help you accelerate common or repetitive tasks. PaintShop Pro X8 provides an updated script framework to help you take advantage the application's automation capabilities. You can record a series of commands as a script that you can playback at any time. This can save you significant time with tedious tasks, which is especially useful if you apply the same effect(s) to many photos.



*You can use scripting to automate applying a Dragan effect to a photo or series of photos.*

Copyright © 2015 Corel Corporation. All rights reserved.

## Corel® PaintShop® Pro X8 Reviewer's Guide

Product specifications, pricing, packaging, technical support and information ("specifications") refer to the retail English version only. The specifications for all other versions (including other language versions) may vary.

INFORMATION IS PROVIDED BY COREL ON AN "AS IS" BASIS, WITHOUT ANY OTHER WARRANTIES OR CONDITIONS, EXPRESS OR IMPLIED, INCLUDING, BUT NOT LIMITED TO, WARRANTIES OF MERCHANTABILITY, SATISFACTORY QUALITY, MERCHANTABILITY OR FITNESS FOR A PARTICULAR PURPOSE, OR THOSE ARISING BY LAW, STATUTE, USAGE OF TRADE, COURSE OF DEALING OR OTHERWISE. THE ENTIRE RISK AS TO THE RESULTS OF THE INFORMATION PROVIDED OR ITS USE IS ASSUMED BY YOU. COREL SHALL HAVE NO LIABILITY TO YOU OR ANY OTHER PERSON OR ENTITY FOR ANY INDIRECT, INCIDENTAL, SPECIAL, OR CONSEQUENTIAL DAMAGES WHATSOEVER, INCLUDING, BUT NOT LIMITED TO, LOSS OF REVENUE OR PROFIT, LOST OR DAMAGED DATA OR OTHER COMMERCIAL OR ECONOMIC LOSS, EVEN IF COREL HAS BEEN ADVISED OF THE POSSIBILITY OF SUCH DAMAGES, OR THEY ARE FORESEEABLE. COREL IS ALSO NOT LIABLE FOR ANY CLAIMS MADE BY ANY THIRD PARTY. COREL'S MAXIMUM AGGREGATE LIABILITY TO YOU SHALL NOT EXCEED THE COSTS PAID BY YOU TO PURCHASE THE MATERIALS. SOME STATES/COUNTRIES DO NOT ALLOW EXCLUSIONS OR LIMITATIONS OF LIABILITY FOR CONSEQUENTIAL OR INCIDENTAL DAMAGES, SO THE ABOVE LIMITATIONS MAY NOT APPLY TO YOU.

Corel, the Corel logo, the Corel balloon logo, PaintShop, VideoStudio, and VideoStudio Pro are trademarks or registered trademarks of Corel Corporation and/or its subsidiaries in Canada, the United States and elsewhere. WinZip is a registered trademark of VAPC (Lux) S.a.r.l. All other product names and any registered or unregistered trademarks mentioned are used for identification purposes only and remain the exclusive property of their respective owners.

# Corel® PaintShop® Pro X8

## Media Contact

**Alex Brazeau**

Public Relations

[photo.media@corel.com](mailto:photo.media@corel.com)



Corel Corporation  
1600 Carling Ave.  
Ottawa, ON  
K1Z 8R7